

XTROLINER

SUPERIOR PERFORMANCE
PIR INSULATION

Partial Fill Cavity Walls

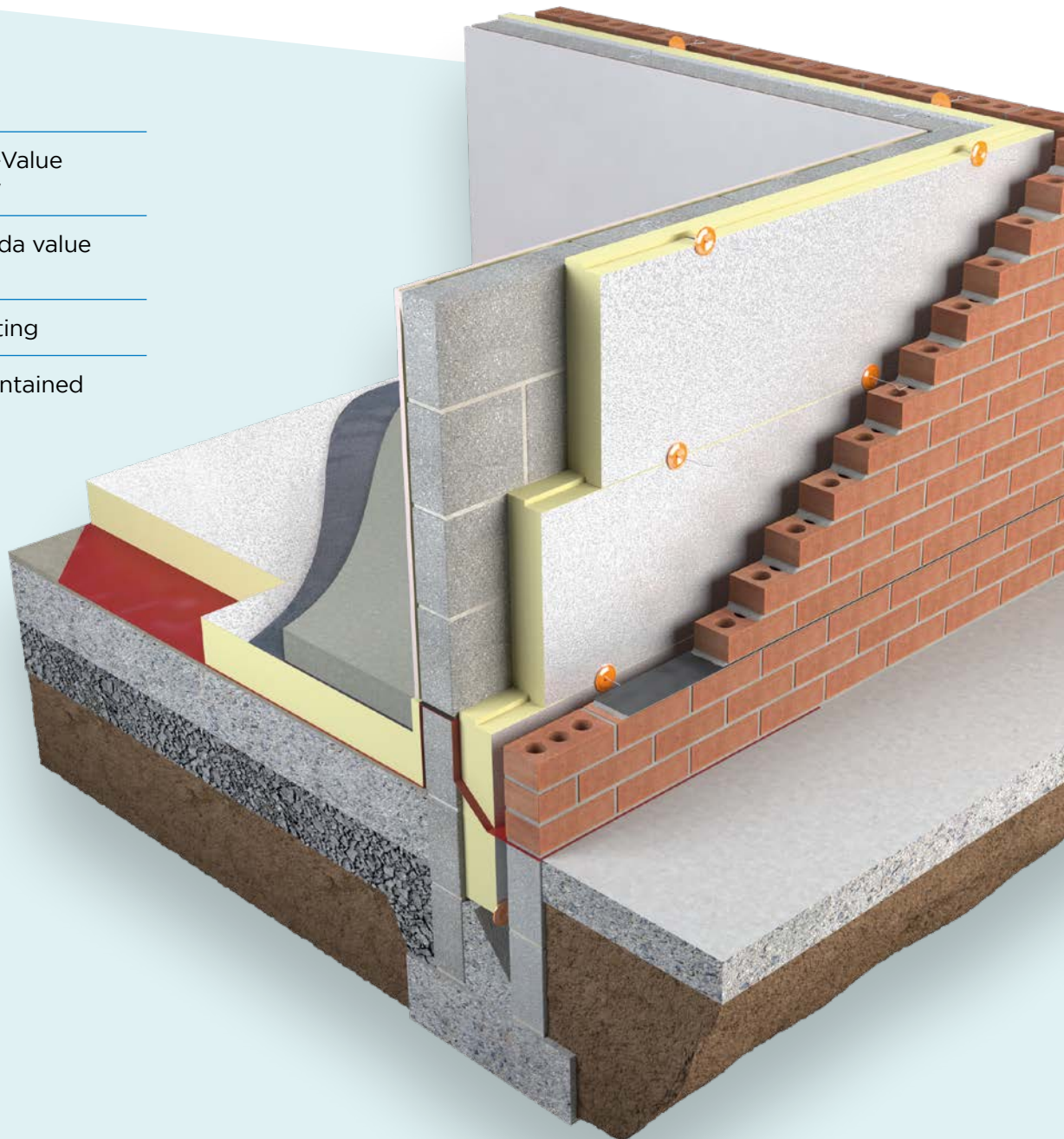
XO/XWP

Achieves 0.15 U-Value
in 150mm cavity

Improved Lambda value
0.020 W/mK

Engineered jointing

Clear cavity maintained



XTROLINER SUPERIOR PERFORMANCE
PIR INSULATION*

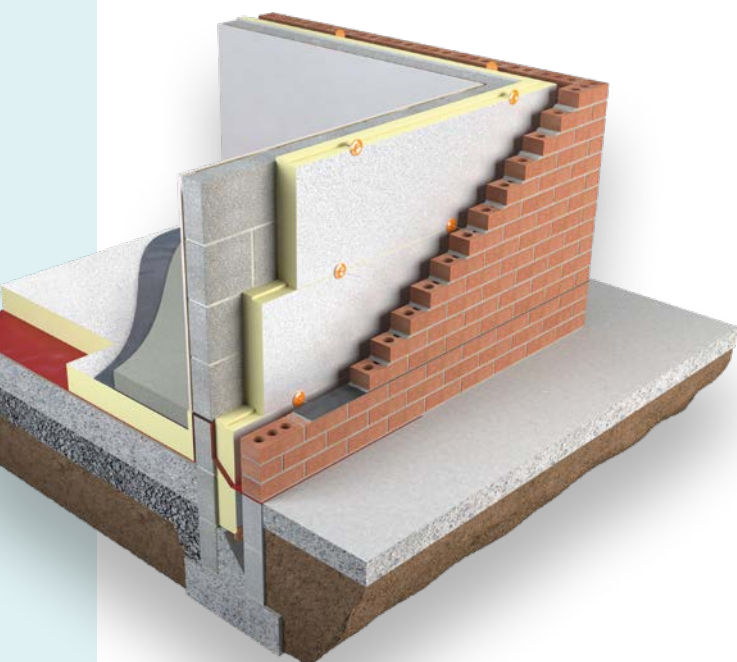
Partial Fill Cavity Walls

XO/XWP

XtroWall Plus is a superior performance insulation with Agrément declared Lambda value of 0.020 W/mK and a Euroclass E fire classification. It is faced with a robust aluminium foil and is available with engineered jointing to deliver improved Thermal Bridging detailing. This lower Lambda Value improves U-Values and meets NZEB standards, providing an excellent choice for passive and low energy builds. XtroWall Plus achieves a passive U-Value of 0.15 W/m²K in a traditional cavity wall. Building with XtroWall Plus, a residual cavity is maintained, offering excellent protection against wind driven rain.

Benefits

- Achieves 0.15 U-Value in 150mm cavity
- Improved Lambda value 0.020 W/mK
- Engineered jointing
- Corner panels & cavity closers: Reduced Thermal Bridging
- Clear cavity maintained

SHIPLAP
JOINTING

*The reference to superior performance relates to the product or range's thermal conductivity or fire performance or a combination of both.

Specification Clause

The partial fill cavity wall insulation shall be XtroWall XO/XWP/110 manufactured to EN 13165 by Unilin Insulation, comprising of a rigid modified Polyisocyanurate (PIR) core with textured robust foil facings and engineered shiplap jointing. The XtroWall Plus 110mm with a declared Lambda value of 0.020 W/mK to achieve a U-Value of 0.15 W/m²K for the wall element. To be installed in accordance with instructions issued by Unilin Insulation.

An Environmental Product Declaration (EPD), certified by IGBC is available for this product. Please contact technical support for further details.



Refer to NBS clause F30 155, F30 12. Uniclass Pr 25 71 63 66.

**Thermal Resistances**

Thickness (mm)	R-Value (m ² K/W)
110	5.5

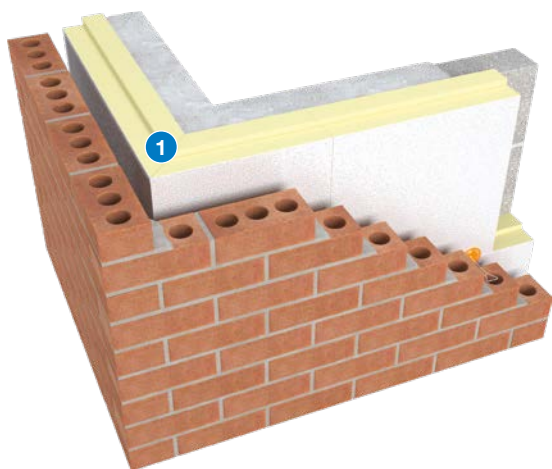
Resistance 'R' Values

The resistance value of any thickness of Unilin insulation can be ascertained by simply dividing the thickness of the material (in metres) by its Agrément declared Lambda value, for example: Lambda 0.020 W/mK and thickness 110mm -> 0.110/0.020 -> R-Value = 5.5. In accordance with EN 13165, R-Values should be rounded down to the nearest 0.05 (m²K/W).

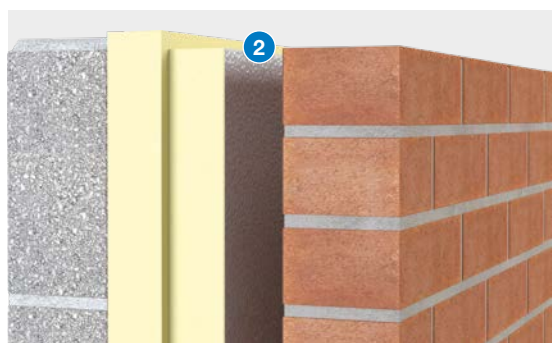


XO/XWP

1. The XtroWall Plus Cavity Wall System includes an optional pre-formed corner panel (XO/CRNXWP) that folds to 90 degrees to effectively insulate a junction that is normally vulnerable to Thermal Bridging and cold spots.

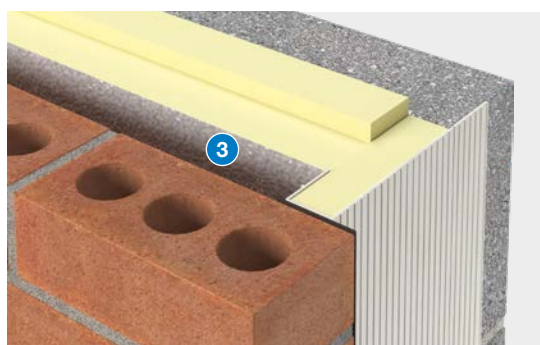


2. The XtroWall Plus engineered jointing offers a practical on-site solution that results in a more robust continuous layer of insulation, minimising the threat of Thermal Bridging and improving the overall U-Value of the wall.



3. The textured robust low emissivity foil facing on XtroWall Plus improves the thermal performance of the wall. The residual cavity is the most effective method of preventing wind-driven rain penetrating a wall from the outside.

A residual cavity is the air space that remains when XtroWall Plus is placed against the inner leaf of the cavity of a wall. The recommended residual cavity width required is 40mm in accordance with Irish Building Regulations, however a reduced cavity may be permissible in certain circumstances. A 50mm residual cavity is typically required in Northern Ireland.



XO/XWP

Length (mm)	1200
Width (mm)	450
Thickness (mm)	110

Other thicknesses may be available depending on minimum order quantity and lead time.

Property & Units

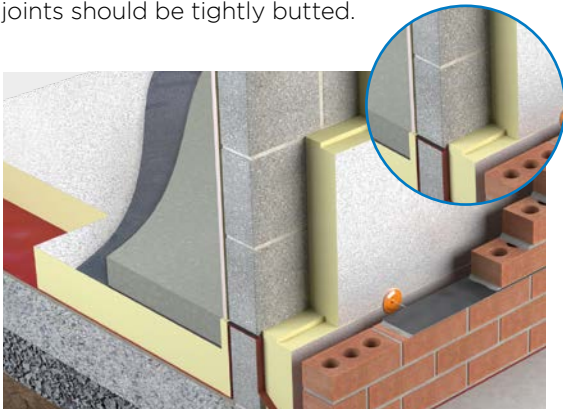
Thermal Conductivity	0.020 (W/mK)
Compressive Strength	120 (kPa)
Reaction to Fire	Euroclass E

Unilin CE Declaration of Performance (DoP) for this product is available for download from our website.

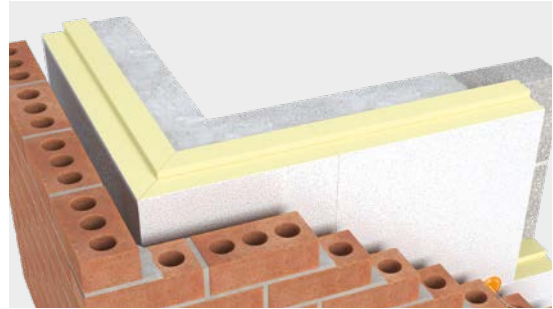
INSTALLATION GUIDELINES

XO/XWP

1. Under Eurocode 6/S.R. 325 it is recommended that no more than four courses of block are laid on the preceding skin before installation of the insulation. This allows for wall ties to be inserted accurately and without bending and thus distorting the physical characteristics of the wall ties. Ensure the wall is level and free of any protrusions before installing the insulation with all edges tightly interlocked.
2. Mortar should be struck from the inner cavity face of the block to ensure mortar squeeze is minimized on the cavity side. The two courses of blockwork can then be built, ensuring the mortar is struck back from the cavity face to prevent mortar squeeze.
3. Insert wall ties maximum 600mm centres one block course below DPC. Wall ties should incorporate retaining clips, be Agrément approved and conform to BS EN 845-1:2013+A1:2016.
4. Secure cavity boards tight against inner leaf with retaining clip on wall ties. Boards should be installed with the tongue uppermost and joints should be tightly butted.



5. Ensure a minimum 225mm overlap with the floor insulation. The receiving block should be plumb to provide a flat surface to accept the insulation. As with setting out, installation should commence from adjacent corners using the XtroWall Plus pre-formed corner boards. Alternate corner boards will achieve the offset break-bonded pattern for the insulation.



6. Maintain a 40mm residual cavity to suit all exposure zones. A 50mm residual cavity is typically required in Northern Ireland. In isolated circumstances where the cavity is obstructed, a minimum 25mm residual cavity should always be maintained and extra consideration should be given to fixings and weatherproofing. Any reduction in cavity width should be agreed with Building Control.
7. Place wall ties at maximum 900mm x 450mm centres, securing with a minimum of 3 wall ties per board.
8. Ensure block joints are fully bonded with unbroken mortar. Fix wall ties 225mm vertically and 150mm horizontally from face of unbonded jambs. Ensure wall ties and cavity are kept clean of mortar. Wall ties should be sloped downwards towards outer leaf.
9. A cavity board should be used to keep the cavity clean. XtroWall Plus corner boards and cavity closers may be fitted to provide robust detailing.



10. Newly erected masonry should be protected to prevent the mortar being washed out of the joints by rain. Walls should be prevented from becoming saturated by covering the top of the wall with waterproof sheets; this is particularly important to minimise the incidence of efflorescence and lime bloom. When any working platform is not in use, the inner board should be turned away from the wall to prevent the splashing of the wall face.

THERMAL PERFORMANCE

XO/XWP

Typical U-Values



Table 1

U-Value calculations to EN ISO:6946

XtroWall Plus Insulation for Partial Fill Cavity Walls

Build up:

- 19mm render
- 100mm outer leaf blockwork
- Low emissivity unventilated cavity (0.713 resistance)
- XtroWall Plus cavity wall partial fill PIR insulation
- 100mm inner leaf blockwork
- Plaster finish

Wall ties taken as S/S wire at 3 ties per m²

Thickness (mm)

Wall Construction	U-Value
Block outer leaf with 100mm dense block inner (plastered)	0.15
Block outer leaf with 215mm dense block inner (plastered)	0.15
Block outer leaf with 215mm dense block inner (fair faced)	0.15
Block outer leaf with 215mm Hollow block inner (plastered)	0.15
Brick outer leaf with 100mm dense block inner (plastered)	0.15

FABRIC ENERGY PERFORMANCE

THE DIFFERENCE IS IN THE DETAIL

XO/XWP

Fabric Energy Efficiency is based on 3 main principles:

1. U-Values
2. Thermal Bridging
3. Air tightness

What is Thermal Bridging?

Thermal Bridging occurs in small areas where the insulation level is reduced significantly, compared with the remainder of the element. They may be 'Repeating,' 'Random,' or 'Non-Repeating.'

How is Thermal Bridging measured?

Thermal bridges are calculated as a linear thermal transmittance value - PSI (Ψ) measured in W/mK. DEAP is the software programme used to calculate a dwelling's energy rating. Within this software, Thermal Bridging through junctions is accounted for as a 'Y-Value.'

Thermal Bridging & Airtightness

A comparison between the Y-Value and a hole in the construction



Y= 0.15

The equivalent of an open 'Garage Door' 2.1m x 3.3m (6.93m²) opening.



Y= 0.08

The equivalent of an open 'Patio Door' 2.1m x 1.8m (3.78m²) opening.



Y= 0.03

The equivalent of an open 'Window' 1.25m x 1.25m (1.56m²) opening

Our innovative range of insulation products deliver the U-Value requirements to meet Passive standards and building regulations, but it's not just about U-Values any longer.

How the system builds, how it interconnects at junctions and how it is witnessed and confirmed on site is equally as important.

Good detailing delivers benefits:

- + More energy efficient building with lower running costs.
- + Less chance of condensation and mould forming at poorly detailed junctions.
- + A more cost effective method of achieving a low energy building.

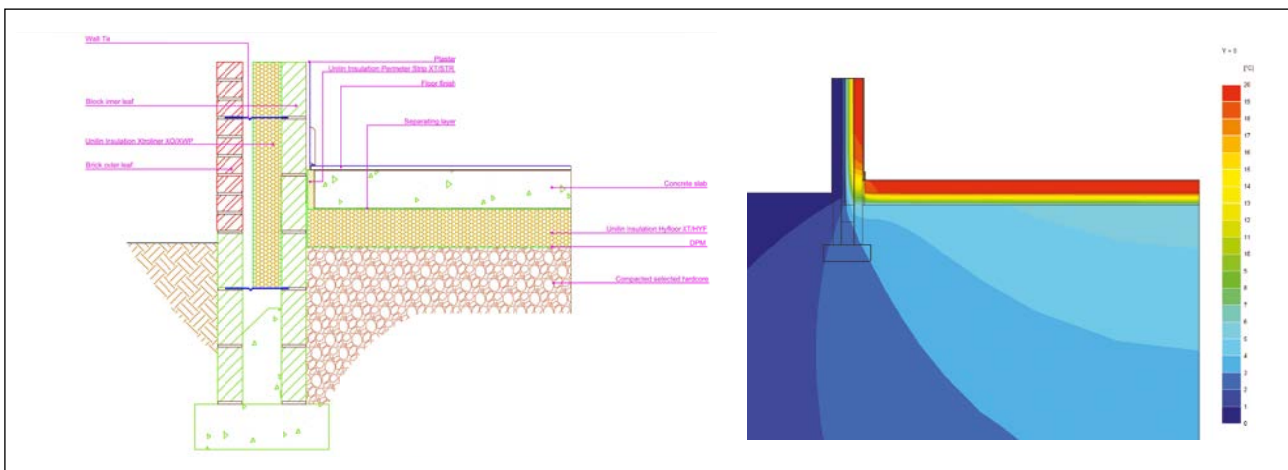
THERMAL BRIDGING

XO/XWP

To achieve good detailing, Acceptable Construction Details (ACDs) should be followed during the planning, design and build process.

Unilin Psi Values Using Acceptable Details

Accredited Details	Block Type	110mm (Psi)
1.01a GF	Dense 1.13	0.165
1.01b GF	Med 0.33	0.088
1.01b GF	Light 0.20	0.061
1.23.2 Lintel Close-R	Dense 1.13	0.004
1.23.2 Lintel Close-R	Med 0.33	0.003
1.25 Jamb Close-R	Dense 1.13	0.003
1.25 Jamb Close-R	Med 0.33	0.002
1.26 Sill Forward	Dense 1.13	0.025
1.26 Sill Forward	Med 0.33	0.024
1.27.1 Corner	Dense 1.13	0.043
1.27.1 Corner	Med 0.33	0.036



For further information on this topic: Unilin has published Thermal Bridging guidance, request your copy from our technical department. Further certificates are also available for download from our website.

Unilin has an extensive library of downloads available on our website. These include the ACDs, BIM files, CAD drawings and Agrément certificates. Unilin also offers CPD training on Thermal Bridging as well as a wide variety of building regulation topics.

[Visit unilininsulation.ie](http://unilininsulation.ie)



HANDLING, CUTTING & STORAGE

Unilin insulation should be stored off the ground, on a clean, flat surface and must be stored under cover. The polythene wrapping is not considered adequate protection for outside exposure. Care should be taken to protect the insulation in storage and during the build process.

The insulation boards can be readily cut using a sharp knife or fine toothed saw. Ensure tight fitting of the insulation boards to achieve continuity of insulation as asked for within the ACDs. Appropriate PPE should be worn when handling insulation. Please refer to Health & Safety data sheets on our website.

The boards are wrapped in polythene packs and each pack is labelled with details of grade/type, size and number of pieces per pack.

Durability

Unilin Insulation products are stable, rot proof, provide no food value to vermin and will remain effective for the lifetime of the building, depending on specification and installation. Care should be taken to avoid contact with acids, petrol, alkalis and mineral oil. When contact is made, clean materials in a safe manner before installation.





Expect more Knowledge

Unilin Insulation, formerly Xtratherm, is one of Ireland's largest manufacturers and suppliers of insulation. We have a 30 plus year history of working in partnership with construction professionals to close the gap between design and as-built performance.

Higher standards of fabric performance call for greater adherence to best practice detailing. To achieve this and to 'close the gap' between design and build, we provide a dedicated Technical Team, all qualified to the highest standards of competency in U-Value calculation and condensation risk analysis.

Here to support you

- BRE listed Thermal Bridging Detailing
- BRE/NSAI Trained Modelling
- BBA/TIMSA calculation competent
- Warranted Calculations available
- Immediate technical response
- DEAP Qualified
- Insulation systems to deliver real onsite performance

Get in touch

T: +353 (0) 46 906 6050 E: tech.ui@unilin.com unilininsulation.ie



Unilin Insulation Ireland Ltd
Liscarton Industrial Estate
Kells Road, Navan
Co. Meath, Ireland
C15 NP79

t. +353 (0) 46 906 6000
e. info.ui@unilin.com

unilininsulation.ie

The Sustainable Solution

Specifying Unilin Insulation is a real commitment to minimising energy consumption, harmful CO₂ emissions and their impact on the environment. Using our products is one of the most effective ways to reduce energy consumption – in fact, after just eight months the energy they save far outweighs the energy used in their production. In addition, our manufacturing facilities operate to an ISO 14001 certified Environmental Management System.

Environmental Product Declaration (EPD)

An Environmental Product Declaration or EPD for a construction product indicates a transparent, robust and credible step in the pursuit and achievement of real sustainability in practice, it is a public declaration of the environmental impacts associated with specified life cycle stages of that product. Unilin EPDs have been independently verified in accordance with EN 15804+A2:2019 and ISO 14025 accounting for stages of the LCA from A1 to A3, with options A4-A5 and modules C1-C4 and D included. The process of creating an EPD allows us to improve performance and reduce resource wastage through improvements in product design and manufacturing efficiency. They play a crucial role in manufacturing and construction and are increasingly asked for by industry.

EPDs and BREEAM

BREEAM is primarily trying to encourage designers to take EPDs into consideration when specifying products. BREEAM requires EPDs to be verified by a third-party. For the Mat O2 category, points are awarded based on whether EPDs are generic, manufacturer-specific, or product-specific. Non 3rd party verified EPDs to EN 15804 cannot be accepted. All of Unilin EPDs are externally verified.

Responsible Sourcing

Unilin has BES 6001 certification for responsible sourcing. The second BREEAM credit under that category is based on responsibly-sourced materials – at least 80% of the total insulation used in roofs, walls, ground floors and services must meet any of tier levels 1 to 6 in the BREEAM table of certification schemes. Our Environmental Management System is certified under EN ISO 14001, and our raw materials come from companies with similarly certified EMS (copies of all certificates are available for BREEAM assessments). This level of responsible sourcing meets tier level 6 in the BREEAM table.

Good workmanship and appropriate site procedures are necessary to achieve expected thermal and airtightness performance. Installation should be undertaken by professional tradespersons. The example calculations are indicative only, for specific U-Value calculations contact Unilin Insulation Technical Support. Unilin technical literature, Agrément certifications and Declarations of Performance are available for download on the Unilin Insulation website. The information contained in this publication is, to the best of our knowledge, true and accurate at the time of publication but any recommendations or suggestions which may be made are without guarantee since the conditions of use are beyond our control. Updated resources may be available on our websites. All images and content within this publication remain the property of Unilin Insulation.

