

(1) WALLS:- INSULATION IN CAVITY

Concrete Intermediate Floor  
within a dwelling

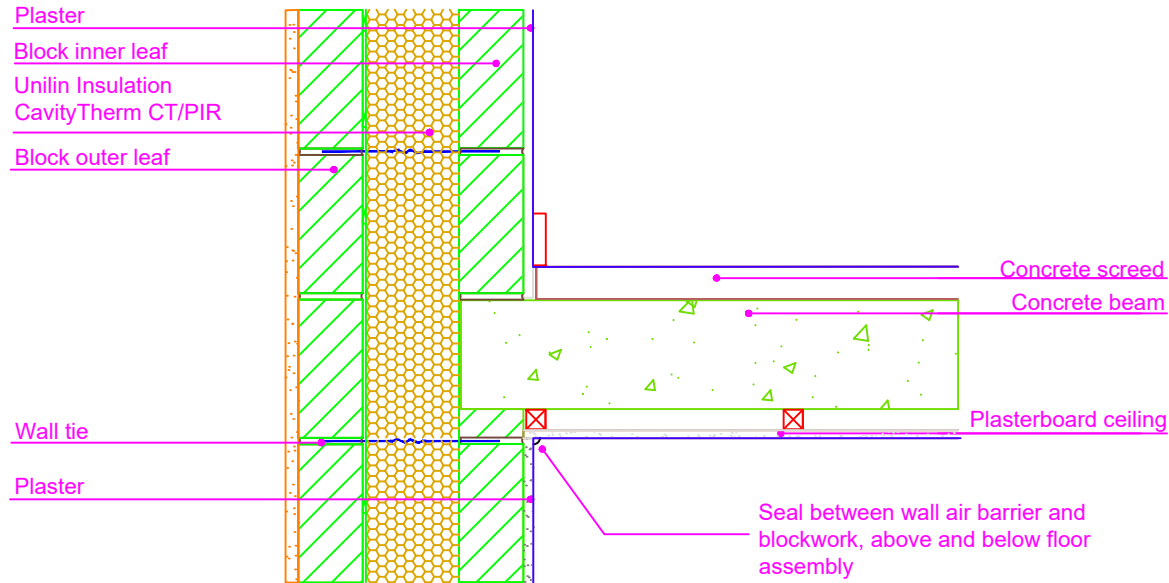
UI - CTPIR - 1.04 - Rev 1 - Inter-Floor

THERMAL PERFORMANCE

CHECKLIST  
(TICK ALL)

ENSURE CAVITYTHERM CT/PIR IS SECURED FIRMLY AGAINST INNER LEAF OF CAVITY WALL

CONTINUE CAVITYTHERM CT/PIR ACROSS FLOOR ABUTMENT ZONE



Drawings are for illustration purpose only - not to scale  
Details are based on the acceptable construction details  
Refer to S.R. 325 for further guidance on detailing

AIR BARRIER - CONTINUITY

CHECKLIST  
(TICK ALL)

SEAL GAP BETWEEN SKIRTING BOARD AND FLOOR WITH A FLEXIBLE SEALANT

SEAL BETWEEN THE WALL AIR BARRIER AND THE TOP AND UNDERSIDE OF THE FLOOR SLAB.

ENSURE CONTINUOUS MORTAR BED BETWEEN FLOOR SLAB AND TOP OF BLOCK WORK WALL

SEAL ALL PENETRATIONS THROUGH AIR BARRIER USING FLEXIBLE SEALANT

SEE ACD 1.04 FOR AIR BARRIER OPTIONS

Copyright © \*2023, Unilin Insulation, All rights reserved

GENERAL NOTES

Keep cavities clean of mortar snots and other debris during construction

Detail applicable:- Concrete Intermediate Floor.

See TGD-B for guidance on fire safety.and TGD E for guidance on sound insulation

Email: [info.ui@unilin.com](mailto:info.ui@unilin.com)  
Phone No: 046 9066050



CERT No: IAB/TM/01  
Thermal Modelers Scheme

CavityTherm CT/PIR mm	110	125	150
<b>Psi Value <math>\psi</math> (W/mK)</b>	<b>0.000</b>	<b>0.000</b>	<b>0.000</b>
Temperature Factor ( <i>f</i> )	0.98	0.98	0.98
U-Value Wall (W/m <sup>2</sup> K)	0.18	0.16	0.13

To be read in conjunction with the Acceptable Construction Details  
Any changes to the above construction may change the calculated values  
The U values indicated on this certificate are the actual U values for the proposed construction.  
The Psi values are calculated using the modelled U value in accordance with the guidelines set out in BR497 and ISO 10211. Contact Unilin Insulation technical support for further guidance