

THERMAL PERFORMANCE

CHECKLIST
(TICK ALL)

ENSURE CAVITYTHERM CT/PIR IS SECURED FIRMLY AGAINST INNER LEAF OF CAVITY WALL

ENSURE SUITABLE FIRE BARRIER IS INSTALLED AT PARTY WALL ABUTMENT ZONE (MINIMUM 250MM X 150MM WITH A THERMAL CONDUCTIVITY OF 0.040 W/m k)

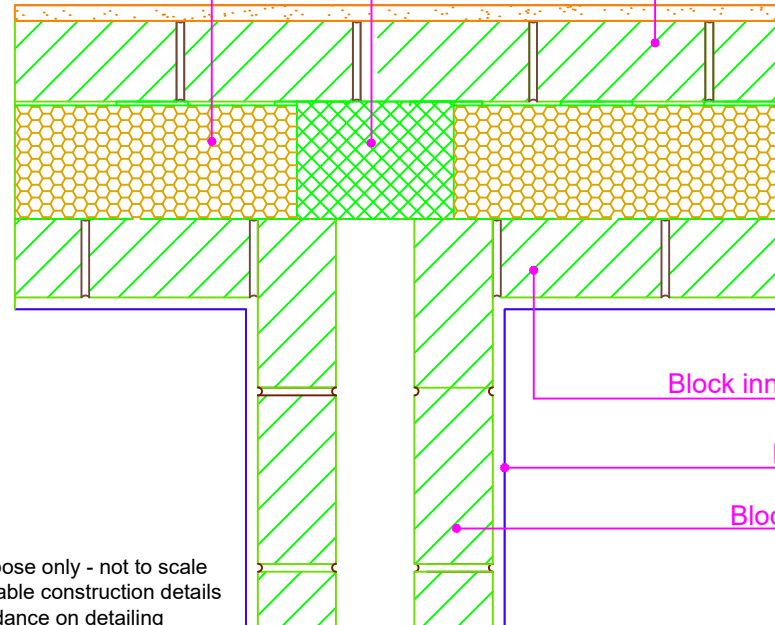


AIR BARRIER - CONTINUITY

CHECKLIST
(TICK ALL)

SEAL ALL PENETRATIONS THROUGH AIR BARRIER USING A FLEXIBLE SEALANT

Block outer leaf
Proprietary Fire Stop
Mineral wool (0.040 W/m K)
Unilin Insulation CavityTherm CT/PIR



Drawings are for illustration purpose only - not to scale
Details are based on the acceptable construction details
Refer to S.R. 325 for further guidance on detailing

Copyright © *2023, Unilin Insulation,
All rights reserved

GENERAL NOTES

Keep cavities clean of mortar snots and other debris during construction

See TGD-B for guidance on fire safety.and TGD E for guidance on sound insulation



CavityTherm CT/PIR mm	110	125	150
Psi Value ψ (W/mK)	0.042*	0.037*	0.032*
Temperature Factor (<i>f</i>)	0.97	0.97	0.98
U-Value Wall (W/m ² K)	0.18	0.16	0.13

CERT No: IAB/TM/01
Thermal Modelers Scheme

***Psi Value ψ (W/mK) applied to each dwelling**

To be read in conjunction with the Acceptable Construction Details
Any changes to the above construction may change the calculated values
The U values indicated on this certificate are the actual U values for the proposed construction.
The Psi values are calculated using the modelled U value in accordance with the guidelines set out in BR497 and ISO 10211. Contact Unilin Insulation technical support for further guidance

Email: info.ui@unilin.com
Phone No: 046 9066050