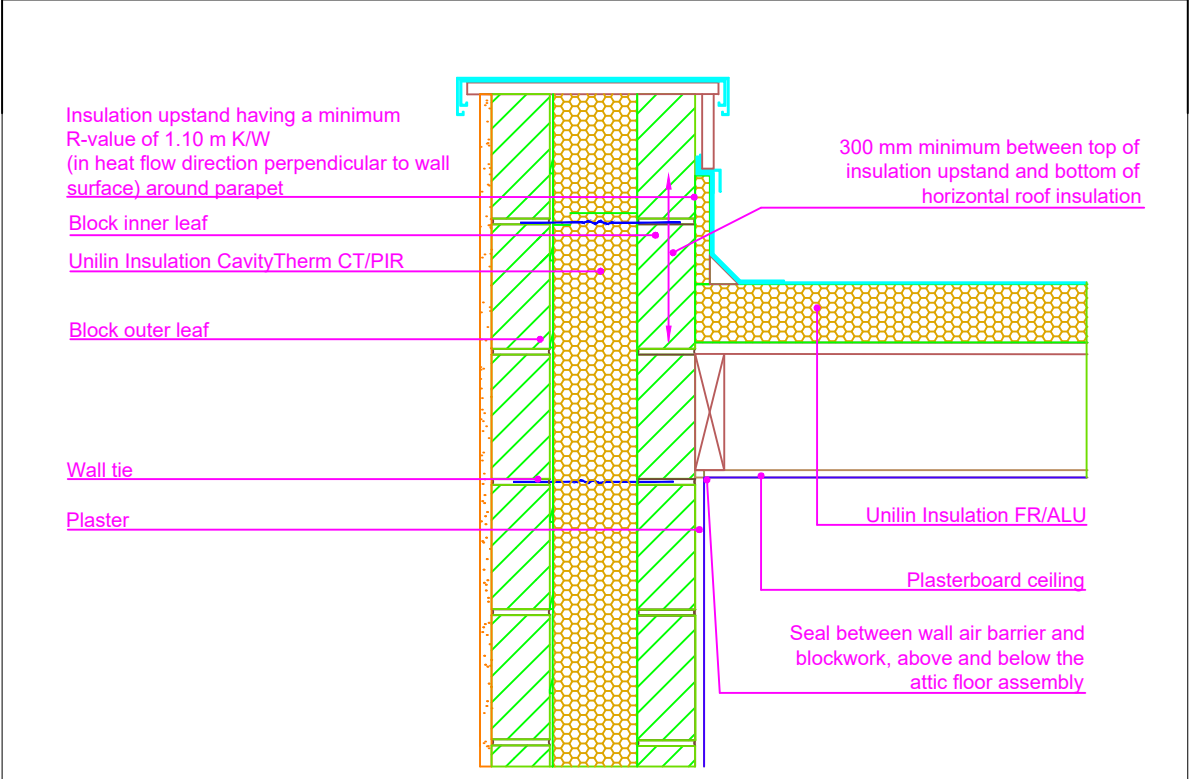


THERMAL PERFORMANCE

CHECKLIST
(TICK ALL)

- INSULATION UPSTAND
XT/STR (PERIMETER STRIP)
HAVING A MINIMUM R-VALUE
OF 1.10 M² KW (IN HEAT
FLOW DIRECTION
PERPENDICULAR TO WALL
SURFACE) AROUND
PARAPET
- 300 MM MINIMUM BETWEEN
TOP OF INSULATION
UPSTAND AND BOTTOM OF
HORIZONTAL FR/ALU
- ENSURE FR/ALU TIGHTLY
ABUTS INNER FACE OF
PARAPET WALL
- ENSURE CAVITYTHERM
CT/PIR IS SECURED FIRMLY
AGAINST INNER LEAF OF
CAVITY WALL



Drawings are for illustration purpose only - not to scale
Details are based on the acceptable construction details
Refer to S.R. 325 for further guidance on detailing

AIR BARRIER - CONTINUITY

CHECKLIST
(TICK ALL)

- SEAL ALL PENETRATIONS
THROUGH AIR BARRIER
USING A FLEXIBLE SEALANT
- FIX CEILING FIRST, AND SEAL
ALL GAPS BETWEEN CEILING
AND MASONRY WALL WITH
EITHER PLASTER, ADHESIVE
OR FLEXIBLE SEALANT

Copyright © *2023, Unilin Insulation,
All rights reserved

GENERAL NOTES

Keep cavities clean of mortar snots and other debris during construction
Thermal performance of junction can be improved significantly by using blockwork with a thermal conductivity of 0.20 W/mK in direction of heat flow in external wall at roof level.
BS5250 requires vapour control layer to be installed between deck and insulation.
Turn up vapour control layer at edge of roof insulation, lap with roof waterproofing layer, and seal.

Email: info.ui@unilin.com
Phone No: 046 9066050



CERT No: IAB/TM/01

Thermal Modelers Scheme

CavityTherm CT/PIR mm	110	125	150
Psi Value ψ (W/mK)	0.221	0.216	0.206
Temperature Factor (f)	0.90	0.90	0.91
U-Value Wall (W/m ² K)	0.18	0.16	0.13
U-Value Roof (W/m ² K)	0.15 - 0.20		

To be read in conjunction with the Acceptable Construction Details
Any changes to the above construction may change the calculated values
The U values indicated on this certificate are the actual U values for the proposed construction.
The Psi values are calculated using the modelled U value in accordance with the guidelines set out in BR497 and ISO 10211. Contact Unilin Insulation technical support for further guidance