

(1) WALLS:- INSULATION IN CAVITY

Ope - Perforated steel lintel
(Dense blockwork)

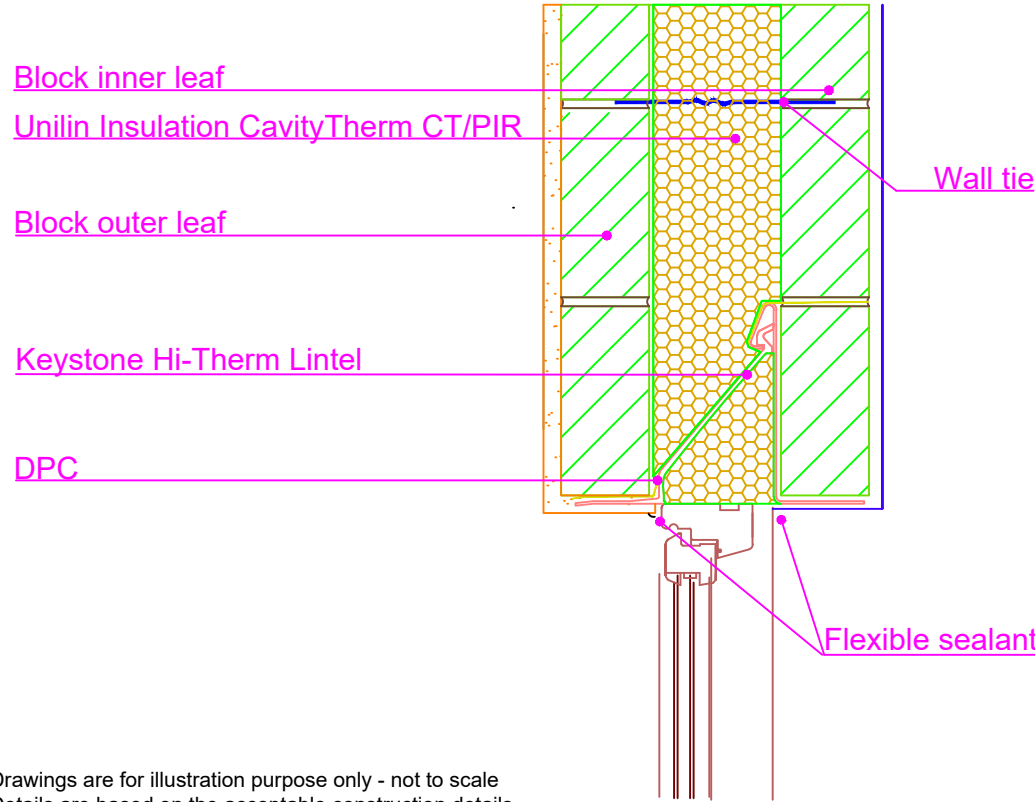
UI - CTPIR - 1.22 - Rev 1 - Lintel

THERMAL PERFORMANCE

CHECKLIST
(TICK ALL)

ENSURE CAVITYTHERM CT/PIR IS SECURED FIRMLY AGAINST INNER LEAF OF CAVITY WALL

KEYSTONE HI-THERM INSULATED LINTEL TO BE USED



Drawings are for illustration purpose only - not to scale
Details are based on the acceptable construction details
Refer to S.R. 325 for further guidance on detailing

AIR BARRIER - CONTINUITY

CHECKLIST
(TICK ALL)

SEAL ALL PENETRATIONS THROUGH AIR BARRIER USING A FLEXIBLE SEALANT

APPLY FLEXIBLE SEALANT TO ALL INTERFACES BETWEEN INTERNAL AIR BARRIER AND WINDOW/DOOR FRAME MEMBERS

SEE ACD 1.22 FOR AIR BARRIER OPTIONS

Copyright © *2023, Unilin Insulation, All rights reserved

GENERAL NOTES

Keep cavities clean of mortar spots and other debris during construction

Email: info.ui@unilin.com
Phone No: 046 9066050



CERT No: IAB/TM/01
Thermal Modelers Scheme

CavityTherm CT/PIR mm	110	125	150
Psi Value ψ (W/mK)	0.032	0.038	0.044
Temperature Factor (<i>f</i>)	0.97	0.95	0.95
U-Value Wall (W/m ² K)	0.18	0.16	0.13

To be read in conjunction with the Acceptable Construction Details
Any changes to the above construction may change the calculated values
The U values indicated on this certificate are the actual U values for the proposed construction.
The Psi values are calculated using the modelled U value in accordance with the guidelines set out in BR497 and ISO 10211. Contact Unilin Insulation technical support for further guidance