

(1) WALLS:- INSULATION IN CAVITY

Open - Jamb with closer block  
(Dense blockwork)

UI - CTPIR - 1.24 - Rev 1 - Jamb

THERMAL PERFORMANCE

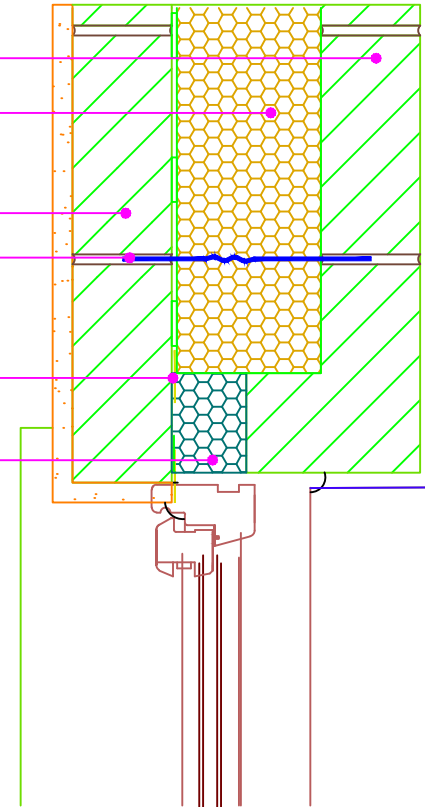
CHECKLIST  
(TICK ALL)

ENSURE CAVITY THERM CT/PIR IS SECURED FIRMLY AGAINST INNER LEAF OF CAVITY WALL

WHERE THERE IS A 125mm OR 150mm WIDE CAVITY ENSURE 75mm PIR (0.022 W/m K) OR WHERE THERE IS A 110mm WIDE CAVITY ENSURE 60mm PIR (0.022 W/m K) INSULATION IS INSTALLED TO CLOSE THE CAVITY



Block inner leaf  
Unilin Insulation CavityTherm CT/PIR  
Block outer leaf  
Wall tie  
DPC  
Unilin Insulation PIR (0.022 W/m K) Cavity closer



Drawings are for illustration purpose only - not to scale  
Details are based on the acceptable construction details  
Refer to S.R. 325 for further guidance on detailing

AIR BARRIER - CONTINUITY

CHECKLIST  
(TICK ALL)

SEAL ALL PENETRATIONS THROUGH AIR BARRIER USING A FLEXIBLE SEALANT

APPLY FLEXIBLE SEALANT TO ALL INTERFACES BETWEEN INTERNAL AIR BARRIER AND WINDOW/DOOR FRAME MEMBERS

IF A PROPRIETARY CAVITY CLOSER IS USED, WHEN FORMING THE AIR BARRIER TO THE WALLS WITH A BLOCKWORK INNER LEAF OR A SCRATCH COAT ON BLOCKS, INSTALL A FLEXIBLE SEALANT BETWEEN THE CAVITY CLOSER AND THE BLOCKWORK WALL

SEE ACD 1.24 FOR AIR BARRIER OPTIONS

Copyright © \*2023, Unilin Insulation, All rights reserved

GENERAL NOTES

Keep cavities clean of mortar spots and other debris during construction



CERT No: IAB/TM/01  
Thermal Modelers Scheme

CavityTherm CT/PIR mm	110	125	150
<b>Psi Value <math>\psi</math> (W/mK)</b>	<b>0.017</b>	<b>0.012</b>	<b>0.016</b>
Temperature Factor ( <i>f</i> )	0.97	0.97	0.97
U-Value Wall (W/m <sup>2</sup> K)	0.18	0.16	0.13

To be read in conjunction with the Acceptable Construction Details  
Any changes to the above construction may change the calculated values  
The U values indicated on this certificate are the actual U values for the proposed construction.  
The Psi values are calculated using the modelled U value in accordance with the guidelines set out in BR497 and ISO 10211. Contact Unilin Insulation technical support for further guidance

Email: [info.ui@unilin.com](mailto:info.ui@unilin.com)  
Phone No: 046 9066050