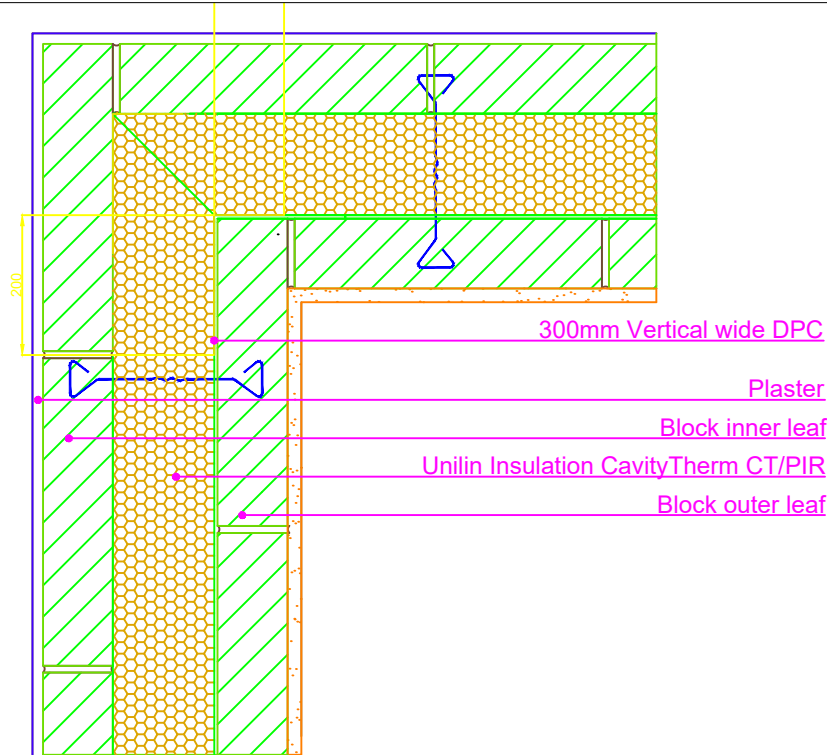


THERMAL PERFORMANCE

CHECKLIST
(TICK ALL)

- ENSURE CAVITYTHERM CT/PIR PREFORMED INTERNAL CORNER BOARD IS SECURED FIRMLY AGAINST INNER LEAF OF CAVITY WALL
- ENSURE CONTINUITY OF INSULATION THROUGHOUT JUNCTION



Drawings are for illustration purpose only - not to scale
Details are based on the acceptable construction details
Refer to S.R. 325 for further guidance on detailing

AIR BARRIER - CONTINUITY

CHECKLIST
(TICK ALL)

- MORTAR JOINTS AROUND BUILT IN JOISTS SHOULD BE RECESSED OR STRUCK AND CAREFULLY POINTED WITH FLEXIBLE SEALANT.
- ALTERNATIVELY JOISTS MAY BE FITTED WITH PROPRIETARY SHOES AS THEY ARE INSTALLED. SEAL SHOE TO BLOCKWORK FACE WITH FLEXIBLE SEALANT
- SEAL BETWEEN WALL AIR BARRIER AND BLOCKWORK, ABOVE AND BELOW THE FLOOR ASSEMBLY
- SEAL ALL PENETRATIONS THROUGH AIR BARRIER USING A FLEXIBLE SEALANT

Copyright © *2023, Unilin Insulation,
All rights reserved

GENERAL NOTES

Keep cavities clean of mortar snots and other debris during construction

Email: info.ui@unilin.com
Phone No: 046 9066050



CERT No: IAB/TM/01
Thermal Modelers Scheme

CavityTherm CT/PIR mm	110	125	150
Psi Value ψ (W/mK)	-0.070	-0.066	-0.060
Temperature Factor (<i>f</i>)	0.98	0.98	0.98
U-Value Wall (W/m ² K)	0.18	0.16	0.13

To be read in conjunction with the Acceptable Construction Details
Any changes to the above construction may change the calculated values
The U values indicated on this certificate are the actual U values for the proposed construction.
The Psi values are calculated using the modelled U value in accordance with the guidelines set out in BR497 and ISO 10211. Contact Unilin Insulation technical support for further guidance