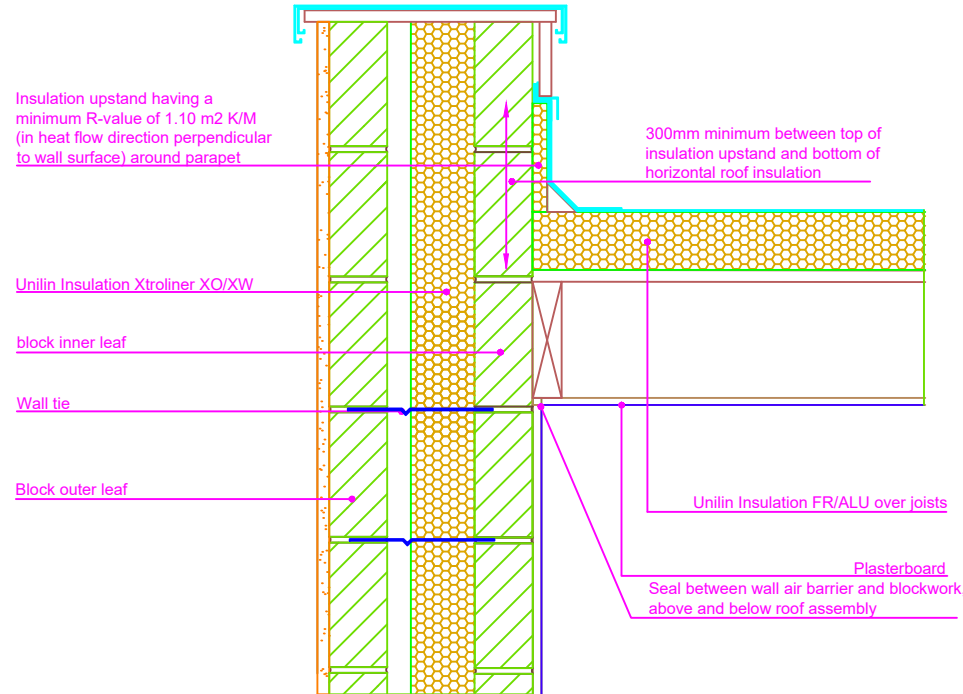


THERMAL PERFORMANCE

CHECKLIST
(TICK ALL)

- INSULATION UPSTAND XT/STR (PERIMETER STRIP) HAVING A MINIMUM R-VALUE OF 1.10 M² K/W (IN HEAT FLOW DIRECTION PERPENDICULAR TO WALL SURFACE) AROUND PARAPET
- 300 MM MINIMUM BETWEEN TOP OF INSULATION UPSTAND AND BOTTOM OF HORIZONTAL FR/ALU
- ENSURE FR/ALU TIGHTLY ABUTS INNER FACE OF PARAPET WALL
- ENSURE XTROWALL XO/XW IS SECURED FIRMLY AGAINST INNER LEAF OF CAVITY WALL



Drawings are for illustration purpose only - not to scale
Details are based on the acceptable construction details
Refer to S.R. 325 for further guidance on detailing

AIR BARRIER - CONTINUITY

CHECKLIST
(TICK ALL)

- SEAL ALL PENETRATIONS THROUGH AIR BARRIER USING A FLEXIBLE SEALANT
- FIX CEILING FIRST, AND SEAL ALL GAPS BETWEEN CEILING AND MASONRY WALL WITH EITHER PLASTER, ADHESIVE OR FLEXIBLE SEALANT

Copyright © *2023, Unilin Insulation, All rights reserved

GENERAL NOTES

Keep cavities clean of mortar snots and other debris during construction
Thermal performance of junction can be improved significantly by using blockwork with a thermal conductivity of ".20 W/m K in direction of heat flow in external wall at roof level.
BS5250 requires vapour control layer to be installed between deck and insulation.
Turn up vapour control layer at edge of roof insulation, lap with roof waterproofing layer, and seal.

Email: info.ui@unilin.com
Phone No: 046 9066050



CERT No: IAB/TM/01

Thermal Modelers Scheme

XtroWall XO/XW	90mm	100mm
Psi Value ψ (W/mK)	0.220	0.216
Temperature Factor (<i>f</i>)	0.90	0.91
U-Value Wall (W/m ² K)	0.18	0.17
U-Value Roof (W/m ² K)	0.15 - 0.20	

To be read in conjunction with the Acceptable Construction Details
Any changes to the above construction may change the calculated values
The U values indicated on this certificate are the actual U values for the proposed construction.
The Psi values are calculated using the modelled U value in accordance with the guidelines set out in BR497 and ISO 10211. Contact Unilin Insulation technical support for further guidance