

(1) WALLS:- INSULATION IN CAVITY

Ope - Perforated steel lintel  
(Dense blockwork)

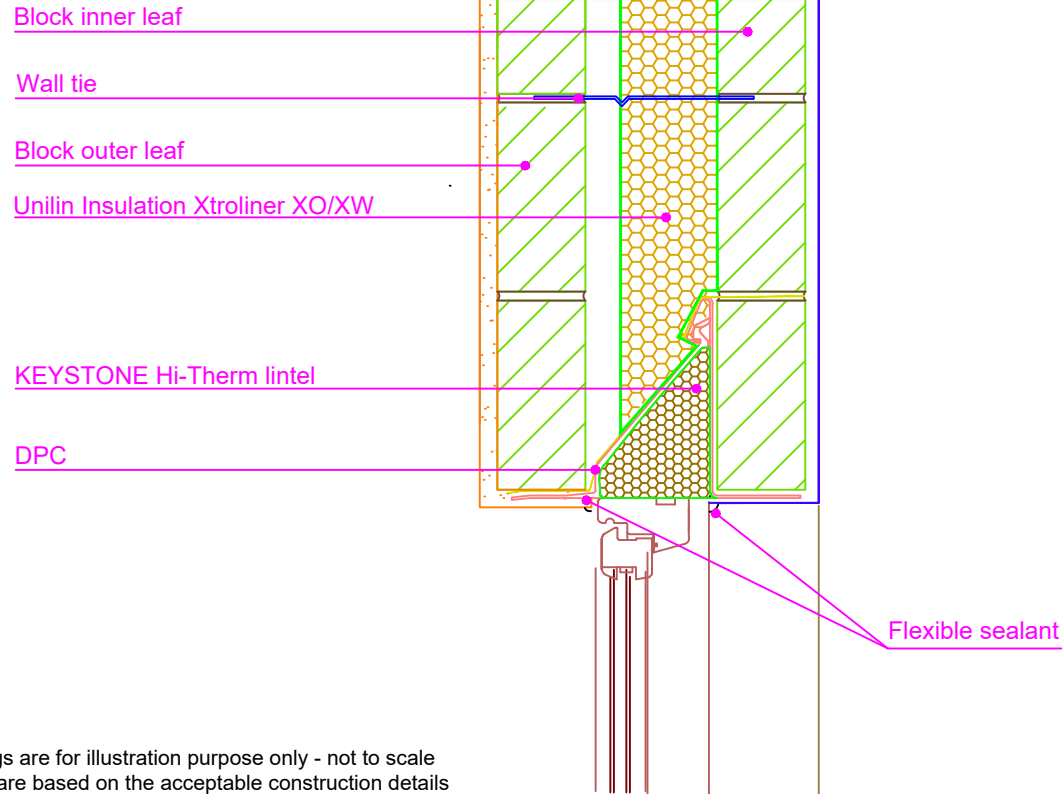
UI - XW - 1.22 - Rev 1 - Lintel

THERMAL PERFORMANCE

CHECKLIST  
(TICK ALL)

ENSURE XTROWALL XO/XW IS SECURED FIRMLY AGAINST INNER LEAF OF CAVITY WALL

KEYSTONE HI-THERM INSULATED LINTEL TO BE USED



Drawings are for illustration purpose only - not to scale  
Details are based on the acceptable construction details  
Refer to S.R. 325 for further guidance on detailing

AIR BARRIER - CONTINUITY

CHECKLIST  
(TICK ALL)

SEAL ALL PENETRATIONS THROUGH AIR BARRIER USING A FLEXIBLE SEALANT

APPLY FLEXIBLE SEALANT TO ALL INTERFACES BETWEEN INTERNAL AIR BARRIER AND WINDOW/DOOR FRAME MEMBERS

SEE ACD 1.23.2 FOR AIR BARRIER OPTIONS

Copyright © \*2023, Unilin Insulation, All rights reserved

GENERAL NOTES

Keep cavities clean of mortar snots and other debris during construction



CERT No: IAB/TM/01  
Thermal Modelers Scheme

XtroWall XO/XW	90mm	100mm
<b>Psi Value <math>\psi</math> (W/mK)</b>	<b>0.042</b>	<b>0.045</b>
Temperature Factor ( <i>f</i> )	0.94	0.94
U-Value Wall (W/m <sup>2</sup> K)	0.18	0.17

To be read in conjunction with the Acceptable Construction Details  
Any changes to the above construction may change the calculated values  
*The U values indicated on this certificate are the actual U values for the proposed construction.*  
*The Psi values are calculated using the modelled U value in accordance with the guidelines set out in BR497 and ISO 10211. Contact Unilin Insulation technical support for further guidance*

Email: [info.ui@unilin.com](mailto:info.ui@unilin.com)  
Phone No: 046 9066050