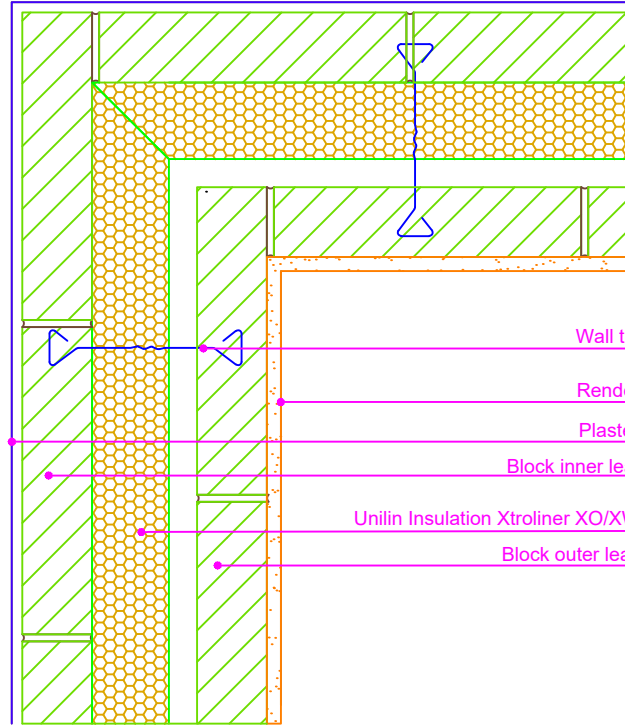


**THERMAL PERFORMANCE**

CHECKLIST  
(TICK ALL)

ENSURE XTROWALL  
XO/XW PREFORMED  
INTERNAL CORNER BOARD  
IS SECURED FIRMLY  
AGAINST INNER LEAF OF  
CAVITY WALL

ENSURE CONTINUITY OF  
INSULATION THROUGHOUT  
JUNCTION



Drawings are for illustration purpose only - not to scale  
Details are based on the acceptable construction details  
Refer to S.R. 325 for further guidance on detailing

**AIR BARRIER - CONTINUITY**

CHECKLIST  
(TICK ALL)

MORTAR JOINTS AROUND  
BUILT IN JOISTS SHOULD BE  
RECESSED OR STRUCK AND  
CAREFULLY POINTED WITH  
FLEXIBLE SEALANT.

ALTERNATIVELY JOISTS MAY  
BE FITTED WITH  
PROPRIETARY SHOES AS  
THEY ARE INSTALLED. SEAL  
SHOE TO BLOCKWORK FACE  
WITH FLEXIBLE SEALANT

SEAL BETWEEN WALL AIR  
BARRIER AND BLOCKWORK,  
ABOVE AND BELOW THE  
FLOOR ASSEMBLY

SEAL ALL PENETRATIONS  
THROUGH AIR BARRIER  
USING A FLEXIBLE SEALANT

Copyright © \*2023, Unilin Insulation,  
All rights reserved

**GENERAL NOTES**

Keep cavities clean of mortar snots and other debris during construction

Email: [info.ui@unilin.com](mailto:info.ui@unilin.com)  
Phone No: 046 9066050



CERT No: IAB/TM/01  
Thermal Modelers Scheme

XtroWall XO/XW	90mm	100mm
<b>Psi Value <math>\psi</math> (W/mK)</b>	<b>-0.074</b>	<b>-0.070</b>
Temperature Factor ( <i>f</i> )	0.95	0.95
U-Value Wall (W/m <sup>2</sup> K)	0.18	0.17

To be read in conjunction with the Acceptable Construction Details  
Any changes to the above construction may change the calculated values  
*The U values indicated on this certificate are the actual U values for the proposed construction.*  
*The Psi values are calculated using the modelled U value in accordance with the guidelines set out in BR497 and ISO 10211. Contact Unilin Insulation technical support for further guidance*