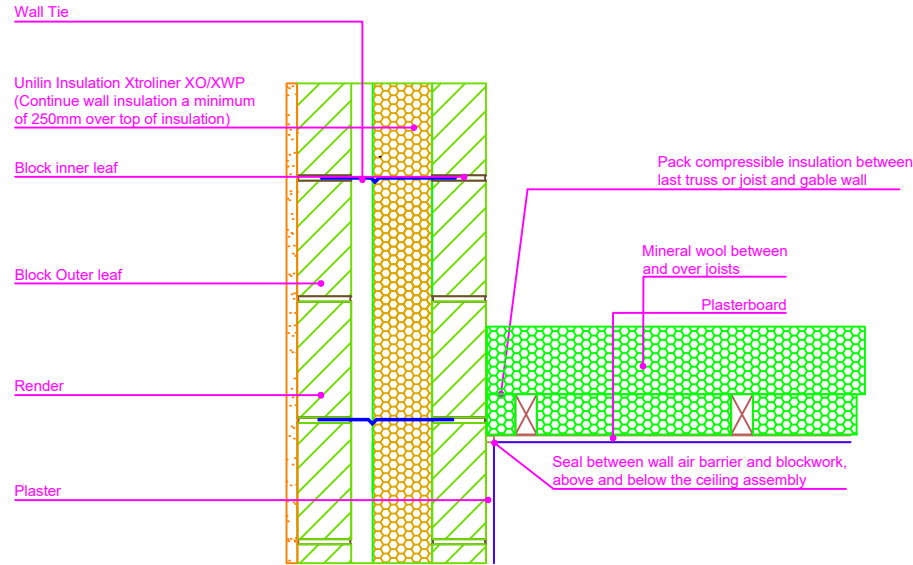


**THERMAL PERFORMANCE**

CHECKLIST  
(TICK ALL)

- ENSURE XTROWALL PLUS 110 IS SECURED FIRMLY AGAINST INNER LEAF OF CAVITY WALL
- CONTINUE XTROWALL PLUS 110 INSULATION A MINIMUM OF 250 MM OVER TOP OF ATTIC INSULATION.
- ENSURE FULL DEPTH OF MINERAL WOOL BETWEEN AND OVER JOISTS EXTENDS TO INNER EDGE OF WALL
- PACK COMPRESSIBLE INSULATION BETWEEN LAST TRUSS OR JOIST, AND GABLE WALL



Drawings are for illustration purpose only - not to scale  
Details are based on the acceptable construction details  
Refer to S.R. 325 for further guidance on detailing

**AIR BARRIER - CONTINUITY**

CHECKLIST  
(TICK ALL)

- SEAL ALL PENETRATIONS THROUGH AIR BARRIER USING A FLEXIBLE SEALANT
- FIX CEILING FIRST, AND SEAL ALL GAPS BETWEEN CEILING AND MASONRY WALL WITH EITHER PLASTER, ADHESIVE OR FLEXIBLE SEALANT

Copyright © \*2023, Unilin Insulation, All rights reserved

**GENERAL NOTES**

Keep cavities clean of mortar snots and other debris during construction

Thermal performance of junction can be improved significantly by using blockwork with a thermal conductivity of  $\leq 0.20$  W/m K in direction of heat flow in external wall at attic floor level or alternatively by running XTROWALL PLUS 110 insulation vertically up internal face of gable wall to a height of 450 mm above ceiling level.



CERT No: IAB/TM/01

Thermal Modelers Scheme

Xtrowall Plus 110	110mm
<b>Psi Value <math>\psi</math> (W/mK)</b>	<b>0.211</b>
Temperature Factor ( <i>f</i> )	0.84
U-Value Wall (W/m <sup>2</sup> K)	0.15
U-Value Ceiling (W/m <sup>2</sup> K)	0.11 - 0.16

Email: [info.ui@unilin.com](mailto:info.ui@unilin.com)  
Phone No: 046 9066050

To be read in conjunction with the Acceptable Construction Details  
Any changes to the above construction may change the calculated values  
The U values indicated on this certificate are the actual U values for the proposed construction.  
The Psi values are calculated using the modelled U value in accordance with the guidelines set out in BR497 and ISO 10211. Contact Unilin Insulation technical support for further guidance