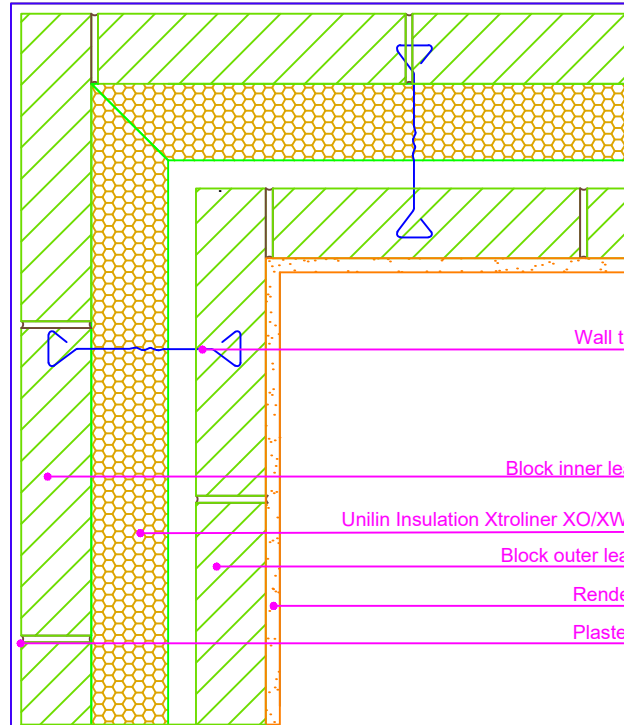


**THERMAL PERFORMANCE**

CHECKLIST  
(TICK ALL)

ENSURE XTROWALL PLUS 110 PREFORMED INTERNAL CORNER BOARD IS SECURED FIRMLY AGAINST INNER LEAF OF CAVITY WALL

ENSURE CONTINUITY OF INSULATION THROUGHOUT JUNCTION



Drawings are for illustration purpose only - not to scale  
Details are based on the acceptable construction details  
Refer to S.R. 325 for further guidance on detailing

**AIR BARRIER - CONTINUITY**

CHECKLIST  
(TICK ALL)

MORTAR JOINTS AROUND BUILT IN JOISTS SHOULD BE RECESSED OR STRUCK AND CAREFULLY POINTED WITH FLEXIBLE SEALANT.   
ALTERNATIVELY JOISTS MAY BE FITTED WITH PROPRIETARY SHOES AS THEY ARE INSTALLED. SEAL SHOE TO BLOCKWORK FACE WITH FLEXIBLE SEALANT

SEAL BETWEEN WALL AIR BARRIER AND BLOCKWORK, ABOVE AND BELOW THE FLOOR ASSEMBLY

SEAL ALL PENETRATIONS THROUGH AIR BARRIER USING A FLEXIBLE SEALANT

Copyright © \*2023, Unilin Insulation, All rights reserved

**GENERAL NOTES**

Keep cavities clean of mortar spots and other debris during construction



CERT No: IAB/TM/01  
Thermal Modelers Scheme

|   |               |
|---|---------------|
| Xtrowall Plus 110                         | 110mm         |
| <b>Psi Value <math>\psi</math> (W/mK)</b> | <b>-0.064</b> |
| Temperature Factor ( <i>f</i> )           | 0.98          |
| U-Value Wall (W/m <sup>2</sup> K)         | 0.15          |

To be read in conjunction with the Acceptable Construction Details  
Any changes to the above construction may change the calculated values  
*The U values indicated on this certificate are the actual U values for the proposed construction.*  
*The Psi values are calculated using the modelled U value in accordance with the guidelines set out in BR497 and ISO 10211. Contact Unilin Insulation technical support for further guidance*

Email: [info.ui@unilin.com](mailto:info.ui@unilin.com)  
Phone No: 046 9066050