

THERMAL PERFORMANCE
CHECKLIST
(TICK ALL)

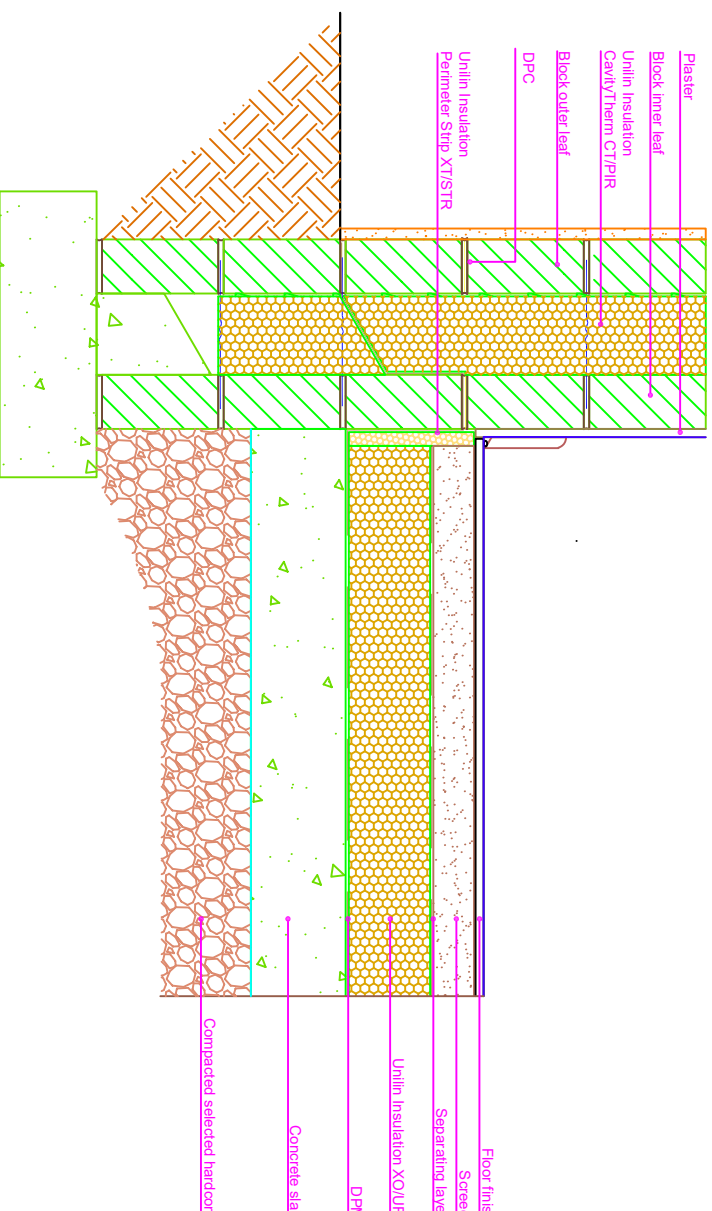


AIR BARRIER - CONTINUITY
CHECKLIST
(TICK ALL)

- ENSURE CAVITY THERM CT/PIR IS SECURED FIRMLY AGAINST INNER LEAF OF CAVITY WALL
- XO/UF FLOOR INSULATION TO TIGHTLY ABUT XT/STR (PERIMETER STRIP)

- ENSURE CAVITY THERM CT/PIR IS INSTALLED AT LEAST 225mm BELOW TOP OF XO/UF

- ENSURE 25MM XT/STR WITH A MINIMUM R VALUE OF 1.13 m² KW (PERIMETER STRIP) TIGHTLY ABUTS BLOCKWORK WALL



Drawings are for illustration purpose only - not to scale
Details are based on the acceptable construction details
Refer to S.R. 325 for further guidance on detailing

GENERAL NOTES

Detail applicable:- Ground-bearing floor, raft foundation, in-situ suspended ground floor slab, pre-cast suspended ground floor. XO/UF above slab with timber floor finish
The wall floor junction is calculated in accordance with the guidance in BR 497 Second Edition section 2.2.2 and 4.7

- SEAL BETWEEN WALL AND FLOOR AIR BARRIER WITH A FLEXIBLE SEALANT
- OR SEAL GAP BETWEEN SKIRTING BOARD AND FLOOR WITH FLEXIBLE SEALANT
- SEAL ALL PENETRATIONS THROUGH AIR BARRIER USING A FLEXIBLE SEALANT
- SEE ACD 1.01a FOR AIR BARRIER OPTIONS

Copyright © *2024, Unilin Insulation,
All rights reserved

CavityTherm CT/PIR mm	110	125	150
Psi Value ψ (W/mk)	0.169	0.168	0.167
Temperature Factor (<i>f</i>)	0.82	0.82	0.83
U-Value Wall (W/m ² K)	0.18	0.16	0.13
U-Value Floor (W/m ² K)	0.11 - 0.17		

CERT No: IAB/TM/01
Thermal Modelers Scheme

