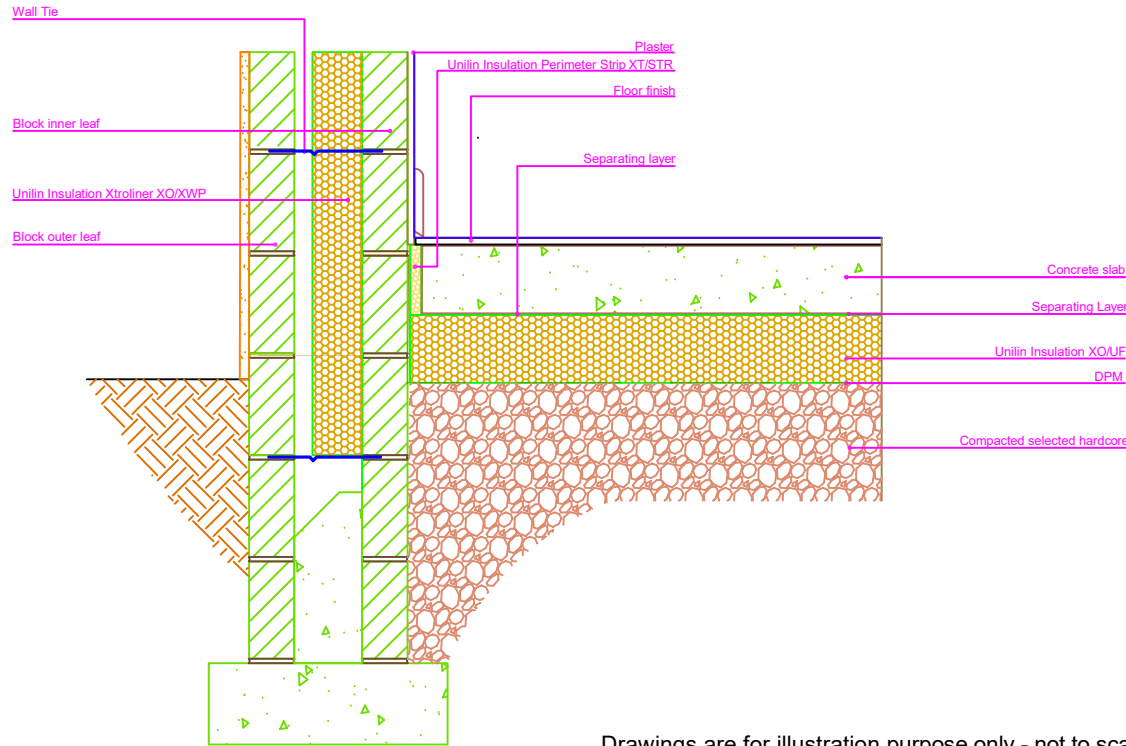


THERMAL PERFORMANCE

CHECKLIST
(TICK ALL)

- ENSURE XTROWALL PLUS 110 IS SECURED FIRMLY AGAINST INNER LEAF OF CAVITY WALL
- XO/UF FLOOR INSULATION TO TIGHTLY ABUT XT/STR (PERIMETER STRIP)
- ENSURE XTROWALL PLUS 110 IS INSTALLED AT 225mm BELOW TOP OF XO/UF
- ENSURE 25MM XT/STR WITH A MINIMUM R VALUE OF 1.13 m² K/W (PERIMETER STRIP) TIGHTLY ABUTS BLOCKWORK WALL



Drawings are for illustration purpose only - not to scale
Details are based on the acceptable construction details
Refer to S.R. 325 for further guidance on detailing

AIR BARRIER - CONTINUITY

CHECKLIST
(TICK ALL)

- SEAL BETWEEN WALL AND FLOOR AIR BARRIER WITH A FLEXIBLE SEALANT
OR
SEAL GAP BETWEEN SKIRTING BOARD AND FLOOR WITH FLEXIBLE SEALANT
- SEAL ALL PENETRATIONS THROUGH AIR BARRIER USING A FLEXIBLE SEALANT
- SEE ACD 1.02a FOR AIR BARRIER OPTIONS

Copyright © *2024, Unilin Insulation,
All rights reserved

GENERAL NOTES

- Keep cavities clean of mortar spots and other debris during construction
- Detail applicable:- Ground-bearing floor, raft foundation, in-situ suspended ground floor slab, pre-cast suspended ground floor. XO/UF below slab
- The wall floor junction is calculated in accordance with the guidance in BR 497 Second Edition section 2.2.2 and 4.7

Email: info.ui@unilin.com
Phone No: 046 9066050



CERT No: IAB/TM/01
Thermal Modelers Scheme

Xtrowall Plus 110	110mm
Psi Value ψ (W/mK)	0.173
Temperature Factor (<i>f</i>)	0.84
U-Value Wall (W/m ² K)	0.15
U-Value Floor (W/m ² K)	0.11 - 0.17

To be read in conjunction with the Acceptable Construction Details
Any changes to the above construction may change the calculated values
The U values indicated on this certificate are the actual U values for the proposed construction.
The Psi values are calculated using the modelled U value in accordance with the guidelines set out in BR497 and ISO 10211. Contact Unilin Insulation technical support for further guidance